

DATA SHEET:

A1.1/2.20.N

ADAPTOR 1/2" NPT x M20 Nickel Plated Brass

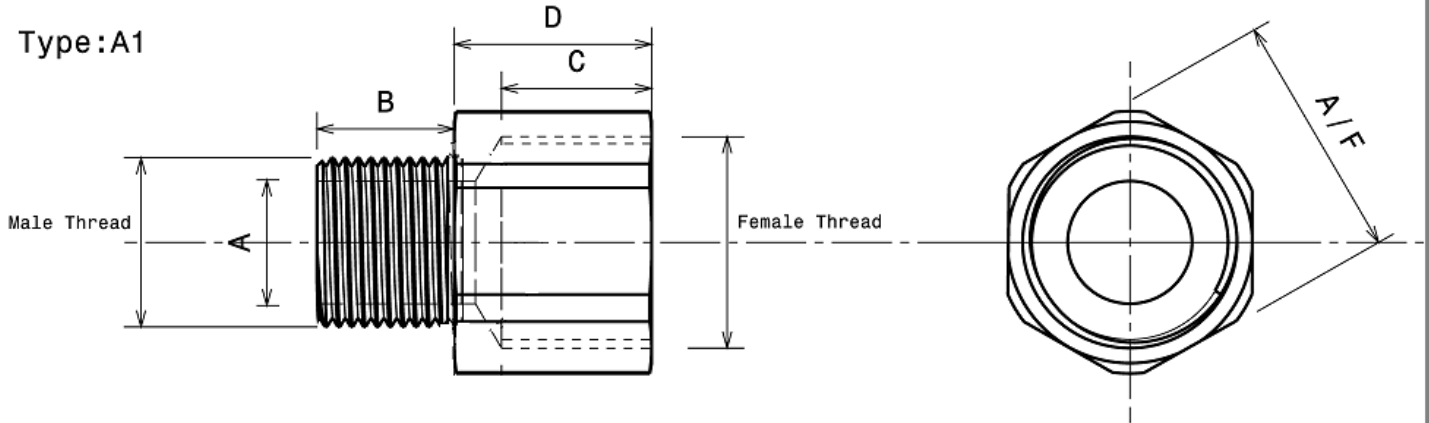
Ex approved Adaptors are used to match enclosure entry threads with the cable gland or conduit when the threads differ, maintaining the hazardous location certification and the overall integrity of the installation.



www.hlsus.com



Type :A1



Approvals & Specifications

ATEX/IEC **Exd IIC Gb / Exe IIC Gb / Ex tb IIIC Db, IP6X**

EN/IEC 60079-0, EN/IEC 60079-1, EN/IEC 60079-7
EN/IEC 60079-31, ATEX/94/9/EC II 2GD

NEC/CEC **Class I, Division 1 Groups ABCD**
Class II, Division 2, Groups EFG
Class III

UL1203, UL514B, UL50
C22.2 Nos. 30, 0.5, 0-M, 45, 18.3-04, 94-M91

AExd IIC / AExe II Class I, Zone 1

UL2279, UL60079-0, UL60079-1, UL60079-7, UL60079-1-1
E60079-0, E60079-1, E60079-7, E60079-1-1

Thread **NPT Male: L1 +/-1 Turn**
Gauging **Metric Female: 1.5mm Pitch- Medium Fit 6H**

Material **Brass Nickel Plated (-100 to +150°C)**

Ingress **With Thread Sealant (Non-Hardening) IP66/68**
Protection **NEMA 4X**
Without Thread Sealant IP54, NEMA 3

Impact **7Nm**
Resistance

Dimensions

Part Number	A1.1/2.20.N
Male Thread	1/2"NPT-14
Thread Bore 'A'	0.571" (14.5mm)
Male Thread Length 'B'	0.787" (20.0mm)
Female Thread	M20 x 1.5mm
Female Thread Depth 'C'	0.709" (18.0mm)
Hexagon A/F	15/16" (23.8mm)
Body Length 'D'	0.945" (24.0mm)