

DATA SHEET:

A1.1/2.20.S

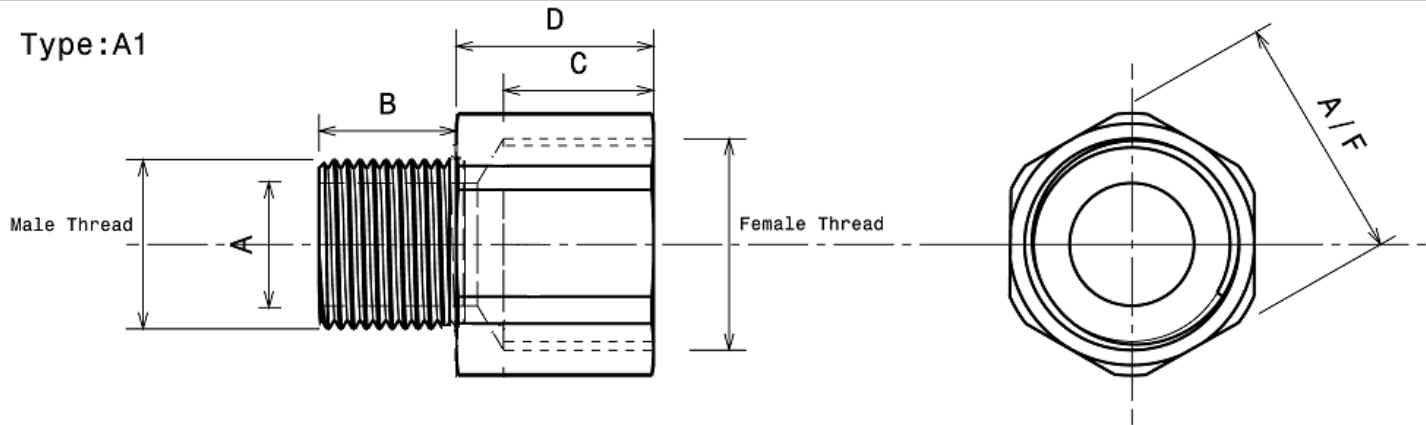
ADAPTOR

Ex approved Adaptors are used to match enclosure entry threads with the cable gland or conduit when the threads differ, maintaining the hazardous location certification and the overall integrity of the installation.



www.hlsus.com

Type: A1



Approvals & Specifications

ATEX Exd IIC Gb / Exe IIC Gb / Ex tb IIIC Db, IP6X
IECEX EN/IEC 60079-0, EN/IEC 60079-1, EN/IEC 60079-7,
EN/IEC 60079-31, ATEX/94/9/EC

NEC/CEC Class I, Division 1 Groups ABCD
Class II, Groups EFG, Class III
UL1203, UL514B, UL50
C22.2 Nos. 30, 0.5, 0-M, 45, 18.3-04, 94-M91

AExd IIC / AExe II Class I, Zone 1
UL2279, UL60079-0, UL60079-1, UL60079-7, UL60079-1-1
E60079-0, E60079-1, E60079-7, E60079-1-1

Thread NPT Male: L1 +/-1 Turn
Gauging Metric Female: 1.5mm Pitch- Medium Fit 6H

Material 316 Stainless Steel 'S' (-100 to +850°C)
Passivated

Ingress With Thread Sealant (Non-Hardening)
Protection IP66/68 NEMA 4X

Impact 7Nm
Resistance

Dimensions

Part Number	A1.1/2.20.S
Male Thread	1/2" NPT-14
Thread Bore 'A'	0.571" (14.5mm)
Male Thread Length 'B'	0.787" (20.0mm)
Female Thread	M20 x 1.5mm
Female Thread Depth 'C'	0.709" (18.0mm)
Hexagon A/F	15/16" (23.8mm)
Body Length 'D'	0.945" (24.0mm)