

DATA SHEET:

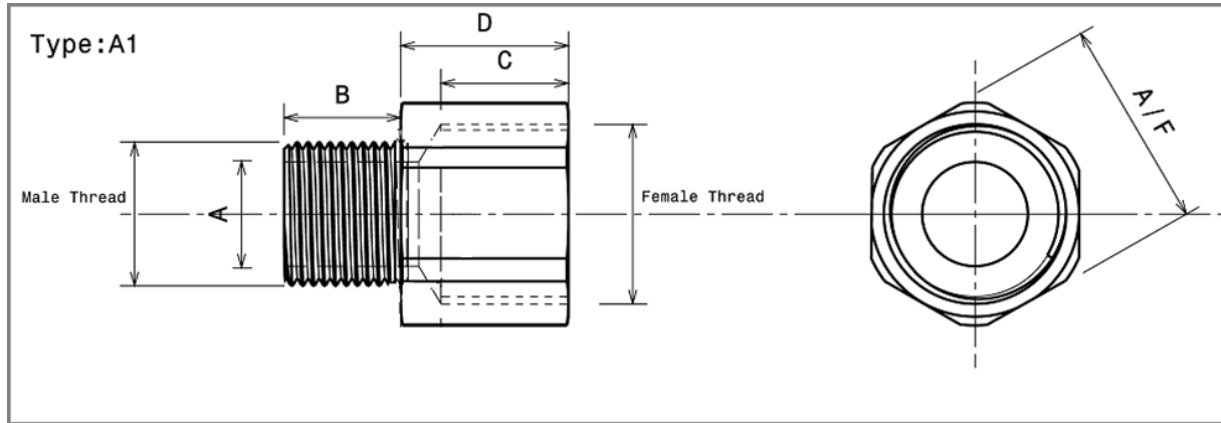
# A1.25.3/4.S.NT

## ADAPTOR M25 x 3/4" STAINLESS STEEL

EX APPROVED ADAPTORS ARE USED TO MATCH ENCLOSURE ENTRY THREADS WITH THE CABLE GLAND OR CONDUIT WHEN THE THREADS DIFFER, MAINTAINING THE HAZARDOUS LOCATION CERTIFICATION AND THE OVERALL INTEGRITY OF THE INSTALLATION.



www.hlsus.com



### Approvals & Specifications

ATEX Exd IIC Gb / Exe IIC Gb / Extb IIIC Db, IP6X  
IECEX EN/IEC 60079-0, EN/IEC 60079-1, EN/ IEC 60079-7,  
EN/IEC 60079-31, ATEX/94/9/EC

NEC/CEC Class I, Division 1 Groups ABCD  
Class II, EFG, Class III  
UL1203, UL514B, UL50  
C22.2 Nos. 30, 0.5, 0-M, 45, 18.3-04, 94-M91  
AExd IIC / AExe II Class I, Zone 1  
UL2279, UL60079-0, UL60079-1, UL60079-7, UL60079-1-1  
E60079-0, E60079-1, E60079-7, E60079-1-1

Thread Metric Male: 1.5mm Pitch - Medium Fit 6g  
Gauging NPT Female: L1+ 1/2 to + 2 Turns

Material 316 Stainless Steel (-100 to +850 °C)  
Passivated

'O' Ring Nitrile (-30 to +90 °C)

Ingress Protection With 'O' Ring or Thread Sealant, IP66/68,  
NEMA 4X

Impact Resistance 7Nm

### Dimensions

Part Number	A1.25.3/4.S.NT
Male Thread	M25 x 1.5mm
Thread Bore 'A'	0.768" (19.5mm)
Male Thread Length 'B'	0.63" (16.0mm)
Female Thread	3/4"NPT-14
Female Thread Depth 'C'	0.709" (18.0mm)
Hexagon A/F	1.1/4" (31.75mm)
Body Length 'D'	0.945" (24.0mm)