

DATA SHEET:

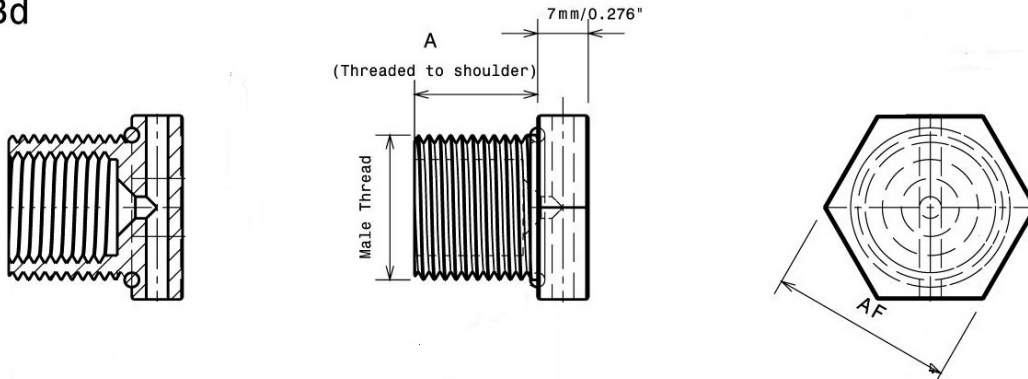
Bd. 1/2.S

Type 'Bd' Breather Drains are used to allow the air inside an 'Ex d' Flameproof or Class I, Division 1 Explosionproof enclosure to breathe with the surrounding atmosphere and also to allow any moisture that enters the enclosure to drain while maintaining the overall integrity of the installation.



www.hlsus.com

Type: Bd



Approvals & Specifications

ATEX Exd IIC Gb & Ex tb IIIC Db IP6X
IECEX IEC 60079-0, IEC 60079-1, IEC 60079-31
ATEX/94/9/EC

NEC/CEC Class I, Division 1 Groups ABCD
Class II, Groups EFG, Class III
UL1203, UL514B, UL50
C22.2 Nos. 30, 0.5, 0-M, 45, 18.3-04, 94-M91
AExd IIC / AExe II Class I, Zone 1
UL2279, UL60079-0, UL60079-1, UL60079-7, UL60079-1-1
E60079-0, E60079-1, E60079-1-1

Thread NPT: Male L1 +/-1 Turn
Gauging

Material 316 Stainless Steel (-50 to +80°C)
Passivated

Ingress IP66, NEMA 4X with Thread Sealant
Protection

Impact 7Nm
Resistance

Dimensions

Part Number	Bd. 1/2.S
Male Thread	1/2" NPT-14
Male Thread Length 'A'	0.787" (20.0mm)
Hex A/F	0.875"