

DATA SHEET:

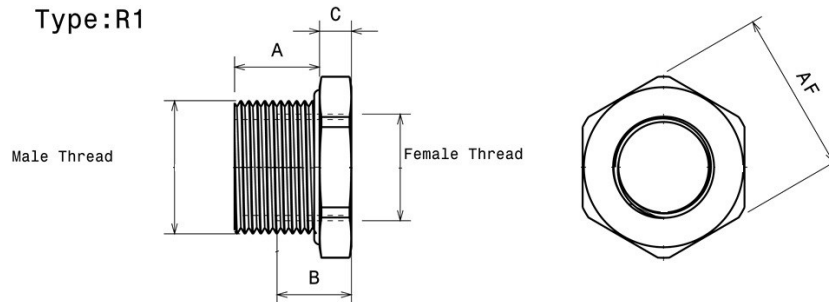
R1.3/4.1/2.S

REDUCER 3/4" X 1/2" 316 STAINLESS STEEL



www.hlsus.com

EX APPROVED REDUCERS ARE USED TO MATCH ENCLOSURE ENTRY THREADS WITH THE CABLE GLAND OR CONDUIT WHEN THE THREADS DIFFER, MAINTAINING THE HAZARDOUS LOCATION CERTIFICATION AND THE OVERALL INTEGRITY OF THE INSTALLATION.



Approvals & Specifications

ATEX Exd IIC Gb / Exe IIC Gb / Extb IIIC Db, IP6X
IECEX EN/IEC 60079-0, EN/IEC 60079-1, EN/IEC 60079-7,
EN/IEC 60079-31, ATEX/94/9/EC

NEC/CEC Class I, Division 1 Groups ABCD
Class II, EFG, Class III
UL1203, UL514B, UL50
C22.2 Nos. 30, 0.5, 0-M, 45, 18.3-04, 94-M91
AExd IIC / AExe II Class I, Zone 1
UL2279, UL60079-0, UL60079-1, UL60079-7, UL60079-1-1
E60079-0, E60079-1, E60079-7, E60079-1-1

Thread Gauging NPT: Male L1 +/-1 Turn
Female L1+ 1/2 to + 2 Turns
Other Thread Forms Available on Application

Material Stainless Steel (-100 to +850 °C)
Passivated

Ingress Protection With Thread Sealant (Non-Hardening) IP66/68
NEMA 4X

Impact Resistance 7Nm

Dimensions

Part Number	R1.3/4.1/2.S
Male Thread	3/4"NPT
Male Thread Length 'A'	20mm (.787")
Female Thread	1/2"NPT
Female Thread Depth 'B'	20 mm (.787")
Hexagon A/F	26.99mm (1.1/16")
Body Length 'C'	6mm (0.236")