

DATA SHEET:

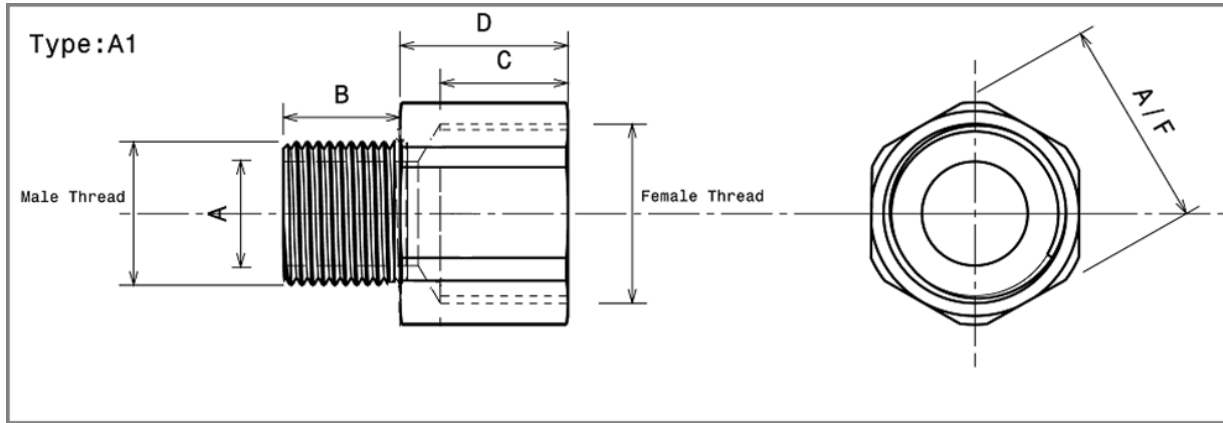
A1.20.3/4.N.NT

ADAPTOR M20 x 3/4" BRASS NICKEL



www.hlsus.com

EX APPROVED ADAPTORS ARE USED TO MATCH ENCLOSURE ENTRY THREADS WITH THE CABLE GLAND OR CONDUIT WHEN THE THREADS DIFFER, MAINTAINING THE HAZARDOUS LOCATION CERTIFICATION AND THE OVERALL INTEGRITY OF THE INSTALLATION.



Approvals & Specifications

ATEX Exd IIC Gb / Exe IIC Gb / Extb IIIC Db, IP6X
IECEX EN/IEC 60079-0, EN/IEC 60079-1, EN/ IEC 60079-7,
EN/IEC 60079-31, ATEX/2014/34/EU

NEC/CEC Class I, Division 1 Groups ABCD
Class II, Groups EFG, Class III
UL1203, UL514B, UL50
C22.2 Nos. 30, 0.5, 0-M, 45, 18.3-04, 94-M91
AExd IIC / AExe II Class I, Zone 1

Thread Metric Male: 1.5mm Pitch - Medium Fit 6g
Gauging NPT Female: L1+ 1/2 to + 2 Turns

Material Brass Nickel Plated (-100 to + 150°C)

'O' Ring Nitrile (-30 to + 90°C)

Ingress Protection With 'O' Ring or Thread Sealant, (Non Hardening)
IP66/68, NEMA 4X

Impact Resistance 7Nm

Dimensions

Part Number	A1.20.3/4.N.NT
Male Thread	M20 x 1.5mm
Thread Bore 'A'	0.571" (14.5mm)
Male Thread Length 'B'	0.63" (16.0mm)
Female Thread	3/4"NPT-14
Female Thread Depth 'C'	0.709" (18.0mm)
Hexagon A/F	1.1/4"(31.75mm)
Body Length 'D'	0.945" (24.0mm)